



P 200

STANDARD

- Preheater
- Batteries and cables
- Electronic battery charger
- Fuel tank integrated in the chassis
- Flexible fuel hoses and oil drain valve
- Electrostatic powder painted chassis made of steel sheet welded
- Stainless galvanized steel design

OUTPUT VALUES

| Standby Power | | | Prime Power | | |
|---------------|-----|--------|-------------|-----|--------|
| kVA | kW | Ampere | kVA | kW | Ampere |
| 200 | 160 | 288 | 180 | 144 | 259 |

DIESEL ENGINE **Perkins**[®]

ISO 8528, ISO 3046, BS 5514, DIN 6271 state-of-the-art engine brands with low fuel consumption, fuel pump mounted, mechanical or electronic type governor are used.

| Brand | Perkins |
|---------------------------------|----------------|
| Model | 1106A-70TAG3 |
| Max Total Output Power (kWm/hp) | 175,8/241,1 |
| Cylinder Volume (lt) | 7,1 |
| Cylinder Arrangement | 6 Single Lines |
| Bore x Stroke (mm*mm) | 105*135 |
| Governor Type | Electronic |
| Cycle (Rotation) | 1500 RPM |
| Intake System | |
| Spray Type | Directly |
| Cooling Type | Water Cooled |
| Electric System (VCD) | 12 |
| Oil Capacity (lt) | 16,5 |
| Cooling Water Capacity (lt) | 21 |
| Fuel Consumption %50 (lt/h) | 19,6 |
| Fuel Consumption %75 (lt/h) | 30,7 |
| Fuel Consumption %100 (lt/h) | 39,8 |



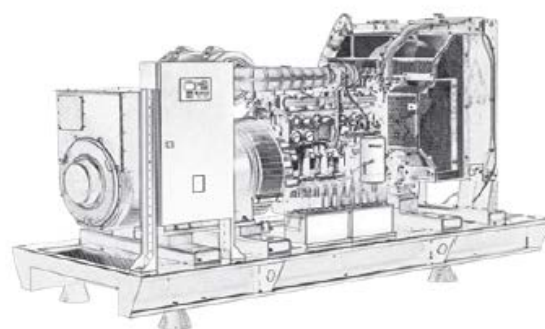
**LERROY[®]
SOMER**
ALTERNATOR

4-pole self-excited brushless, synchronous alternator, maintenance-free bearing system, providing precise voltage adjustment with electronic type voltage regulator.

| | |
|--------------------------------|------------------|
| Output Voltage (V) | 230/400 |
| Frequency (Hz) | 50 |
| Permanent Voltage Reg. (±) (%) | 0,01 |
| Short Circuit Current | % 300 (10 sec) |
| Insulation Class | H |
| Protection Class | IP23 |
| Efficiency(%) | 92,4 |
| Working Time at Overload | % 110 for 1 hour |
| Power Factor (cos Phi) | 0,8 |
| Total Harmonic Distortion Rate | % 2 less than |
| Connection Style | Phillips (Star) |
| Pole Number | 4 |
| Number of Beds | Single |
| Type | 5 |

DIMENSIONS AND WEIGHT

| | | | | | | |
|---------------|-------------------------|------|--|-------------|-------------------------|------|
| CANOPY | Width (mm) | 1100 | | OPEN | Width (mm) | 1100 |
| | Size (mm) | 3200 | | | Size (mm) | 2500 |
| | Height (mm) | 1800 | | | Height (mm) | 1650 |
| | Weight (Kg) | 2100 | | | Weight (Kg) | 1700 |
| | Fuel Tank Capacity (Lt) | 280 | | | Fuel Tank Capacity (Lt) | 280 |





OPTIONAL FEATURES

- Sound insulation
- Transfer board
- Fuel water separator filter
- Alternator output switch
- Fuel tank heater
- Oil heater
- External fuel tank and transfer pump
- Remote monitoring and control
- Synchronization systems
- Special type exhaust silencer
- Trailer

CONTROL PANEL FEATURES



- Diesel and gas generator support
- 400 Hz generator support
- Event record with 400x measurement value
- All parameters can be changed from the front panel
- 3 level program password
- 128x64 pixel graphic LCD
- Language upload
- Current-voltage waveform
- Current-voltage harmonic analysis
- 16 Amp / 250V outputs
- 8 programmed digital inputs
- 6 programmed digital outputs
- 3 programmed analog inputs
- CANBUS-J1939 & MPU input
- 3 scheduled service alarms
- Multiple automatic test program
- Dual generator support, equal aging
- Fine speed adjustment (some ECUs)
- Automatic fuel pump control
- Protection cancellation feature
- Overpower protection
- Reverse power protection
- Overcurrent IDMT protection
- Load shedding, dummy load
- Multiple load shedding programs
- Current unbalance protection
- Voltage unbalance protection
- Fuel filling and theft alarms
- Battery backed real time clock
- Idle speed control
- Battery charging operation
- Battle mode support
- Multiple nominal condition definitions
- Contactor and motorized switch drive
- 4 quarter energy meters
- Network energy meters
- Fuel fill counter
- Fuel consumption counter
- Modem diagnostic page
- RS-232 and GPRS parameter setting
- Free configuration software
- SMS control facility
- Ready to watch the center
- Mobile generator support
- Automatic GSM geolocation
- GPS connection (RS232)
- Installing software via USB
- IP65 protection (with gasket)