



## V 94

### STANDARD

- Preheater
- Batteries and cables
- Electronic battery charger
- Fuel tank integrated in the chassis
- Flexible fuel hoses and oil drain valve
- Electrostatic powder painted chassis made of steel sheet welded
- Stainless galvanized steel design

## OUTPUT VALUES

| Standby Power |    |        | Prime Power |    |        |
|---------------|----|--------|-------------|----|--------|
| kVA           | kW | Ampere | kVA         | kW | Ampere |
| 94            | 75 | 136    | 85          | 68 | 122    |

## DIESEL ENGINE **VOLVO PENTA**

ISO 8528, ISO 3046, BS 5514, DIN 6271 state-of-the-art engine brands with low fuel consumption, fuel pump mounted, mechanical or electronic type governor are used.

| Brand                           | Volvo          |
|---------------------------------|----------------|
| Model                           | TAD530GE       |
| Max Total Output Power (kWm/hp) | 83/113         |
| Cylinder Volume (lt)            | 4,76           |
| Cylinder Arrangement            | 4 Single Lines |
| Bore x Stroke (mm*mm)           | 108*130        |
| Governor Type                   | Electronic     |
| Cycle (Rotation)                | 1500 RPM       |
| Intake System                   | Turbocharger   |
| Spray Type                      | Directly       |
| Cooling Type                    | Water Cooled   |
| Electric System (VCD)           | 12             |
| Oil Capacity (lt)               | 13             |
| Cooling Water Capacity (lt)     | 19,7           |
| Fuel Consumption %50 (lt/h)     | 10             |
| Fuel Consumption %75 (lt/h)     | 15             |
| Fuel Consumption %100 (lt/h)    | 19             |



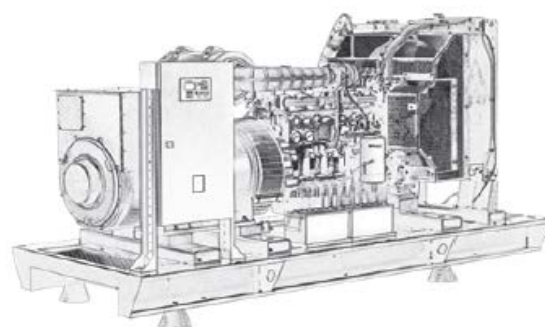
**LERROY<sup>®</sup>  
SOMER**  
**ALTERNATOR**

4-pole self-excited brushless, synchronous alternator, maintenance-free bearing system, providing precise voltage adjustment with electronic type voltage regulator.

|                                |                  |
|--------------------------------|------------------|
| Output Voltage (V)             | 230/400          |
| Frequency (Hz)                 | 50               |
| Permanent Voltage Reg. (±) (%) | 0,01             |
| Short Circuit Current          | % 300 (10 sec)   |
| Insulation Class               | H                |
| Protection Class               | IP23             |
| Efficiency(%)                  | 90,8             |
| Working Time at Overload       | % 110 for 1 hour |
| Power Factor (cos Phi)         | 0,8              |
| Total Harmonic Distortion Rate | % 3              |
| Connection Style               | Phillips (Star)  |
| Pole Number                    | 4                |
| Number of Beds                 | Single           |
| Type                           | 4                |

**DIMENSIONS AND WEIGHT**

|               |                         |      |  |             |                         |      |
|---------------|-------------------------|------|--|-------------|-------------------------|------|
| <b>CANOPY</b> | Width (mm)              | 1100 |  | <b>OPEN</b> | Width (mm)              | 1100 |
|               | Size (mm)               | 2900 |  |             | Size (mm)               | 2200 |
|               | Height (mm)             | 1800 |  |             | Height (mm)             | 1600 |
|               | Weight (Kg)             | 1550 |  |             | Weight (Kg)             | 1300 |
|               | Fuel Tank Capacity (Lt) | 220  |  |             | Fuel Tank Capacity (lt) | 220  |





## OPTIONAL FEATURES

- Sound insulation
- Transfer board
- Fuel water separator filter
- Alternator output switch
- Fuel tank heater
- Oil heater
- External fuel tank and transfer pump
- Remote monitoring and control
- Synchronization systems
- Special type exhaust silencer
- Trailer

## CONTROL PANEL FEATURES



- Diesel and gas generator support
- 400 Hz generator support
- Event record with 400x measurement value
- All parameters can be changed from the front panel
- 3 level program password
- 128x64 pixel graphic LCD
- Language upload
- Current-voltage waveform
- Current-voltage harmonic analysis
- 16 Amp / 250V outputs
- 8 programmed digital inputs
- 6 programmed digital outputs
- 3 programmed analog inputs
- CANBUS-J1939 & MPU input
- 3 scheduled service alarms
- Multiple automatic test program
- Dual generator support, equal aging
- Fine speed adjustment (some ECUs)
- Automatic fuel pump control
- Protection cancellation feature
- Overpower protection
- Reverse power protection
- Overcurrent IDMT protection
- Load shedding, dummy load
- Multiple load shedding programs
- Current unbalance protection
- Voltage unbalance protection
- Fuel filling and theft alarms
- Battery backed real time clock
- Idle speed control
- Battery charging operation
- Battle mode support
- Multiple nominal condition definitions
- Contactor and motorized switch drive
- 4 quarter energy meters
- Network energy meters
- Fuel fill counter
- Fuel consumption counter
- Modem diagnostic page
- RS-232 and GPRS parameter setting
- Free configuration software
- SMS control facility
- Ready to watch the center
- Mobile generator support
- Automatic GSM geolocation
- GPS connection (RS232)
- Installing software via USB
- IP65 protection (with gasket)