



## B 660

### STANDARD

Preheater  
 Batteries and cables  
 Electronic battery charger  
 Fuel tank integrated in the chassis  
 Flexible fuel hoses and oil drain valve  
 Electrostatic powder painted chassis made of steel sheet welded  
 Stainless galvanized steel design

## OUTPUT VALUES

| Standby Power |     |        | Prime Power |     |        |
|---------------|-----|--------|-------------|-----|--------|
| kVA           | kW  | Ampere | kVA         | kW  | Ampere |
| 660           | 528 | 950    | 600         | 480 | 864    |

## DIESEL ENGINE MOTEURS Baudouin

ISO 8528, ISO 3046, BS 5514, DIN 6271 state-of-the-art engine brands with low fuel consumption, fuel pump mounted, mechanical or electronic type governor are used.

| Brand                           | Baudouin                |
|---------------------------------|-------------------------|
| Model                           | 6M33G660/5              |
| Max Total Output Power (kWm/hp) | 572/769                 |
| Cylinder Volume (lt)            | 19,6                    |
| Cylinder Arrangement            | 6 Single Lines          |
| Bore x Stroke (mm*mm)           | 150*185                 |
| Governor Type                   | Electronic              |
| Cycle (Rotation)                | 1500 RPM                |
| Intake System                   | Turbocharge/Intercooler |
| Spray Type                      | Directly                |
| Cooling Type                    | Water Cooled            |
| Electric System (VCD)           | 24                      |
| Oil Capacity (lt)               | 60,5                    |
| Cooling Water Capacity (lt)     | 127                     |
| Fuel Consumption %50 (lt/h)     | 60                      |
| Fuel Consumption %75 (lt/h)     | 96                      |
| Fuel Consumption %100 (lt/h)    | 126                     |



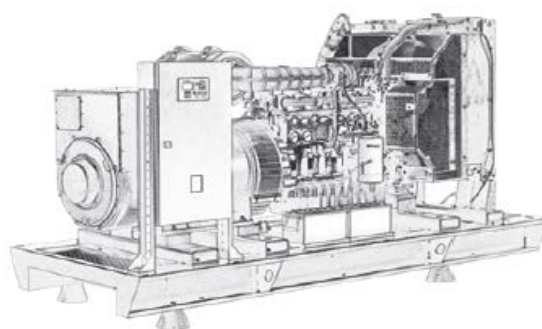
**LEROY  
SOMER**  
**ALTERNATOR**

4-pole self-excited brushless, synchronous alternator, maintenance-free bearing system, providing precise voltage adjustment with electronic type voltage regulator.

|                                |                  |
|--------------------------------|------------------|
| Output Voltage (V)             | 230/400          |
| Frequency (Hz)                 | 50               |
| Permanent Voltage Reg. (±) (%) | 0,01             |
| Short Circuit Current          | % 300 (10 sec)   |
| Insulation Class               | H                |
| Protection Class               | IP23             |
| Efficiency(%)                  | 95,8             |
| Working Time at Overload       | % 110 for 1 hour |
| Power Factor (cos Phi)         | 0,8              |
| Total Harmonic Distortion Rate | % 1 less than    |
| Connection Style               | Phillips (Star)  |
| Pole Number                    | 4                |
| Number of Beds                 | Single           |
| Type                           | 05               |

**DIMENSIONS AND WEIGHT**

|               |                         |      |  |             |                         |      |
|---------------|-------------------------|------|--|-------------|-------------------------|------|
| <b>CANOPY</b> | Width (mm)              | 1900 |  | <b>OPEN</b> | Width (mm)              | 1900 |
|               | Size (mm)               | 4200 |  |             | Size (mm)               | 4200 |
|               | Height (mm)             | 2500 |  |             | Height (mm)             | 2100 |
|               | Weight (Kg)             | 5400 |  |             | Weight (Kg)             | 4900 |
|               | Fuel Tank Capacity (Lt) | 700  |  |             | Fuel Tank Capacity (lt) | 700  |





## OPTIONAL FEATURES

- Sound insulation
- Transfer board
- Fuel water separator filter
- Alternator output switch
- Fuel tank heater
- Oil heater
- External fuel tank and transfer pump
- Remote monitoring and control
- Synchronization systems
- Special type exhaust silencer
- Trailer

## CONTROL PANEL FEATURES



- Diesel and gas generator support
- 400 Hz generator support
- Event record with 400x measurement value
- All parameters can be changed from the front panel
- 3 level program password
- 128x64 pixel graphic LCD
- Language upload
- Current-voltage waveform
- Current-voltage harmonic analysis
- 16 Amp / 250V outputs
- 8 programmed digital inputs
- 6 programmed digital outputs
- 3 programmed analog inputs
- CANBUS-J1939 & MPU input
- 3 scheduled service alarms
- Multiple automatic test program
- Dual generator support, equal aging
- Fine speed adjustment (some ECUs)
- Automatic fuel pump control
- Protection cancellation feature
- Overpower protection
- Reverse power protection
- Overcurrent IDMT protection
- Load shedding, dummy load
- Multiple load shedding programs
- Current unbalance protection
- Voltage unbalance protection
- Fuel filling and theft alarms
- Battery backed real time clock
- Idle speed control
- Battery charging operation
- Battle mode support
- Multiple nominal condition definitions
- Contactor and motorized switch drive
- 4 quarter energy meters
- Network energy meters
- Fuel fill counter
- Fuel consumption counter
- Modem diagnostic page
- RS-232 and GPRS parameter setting
- Free configuration software
- SMS control facility
- Ready to watch the center
- Mobile generator support
- Automatic GSM geolocation
- GPS connection (RS232)
- Installing software via USB
- IP65 protection (with gasket)